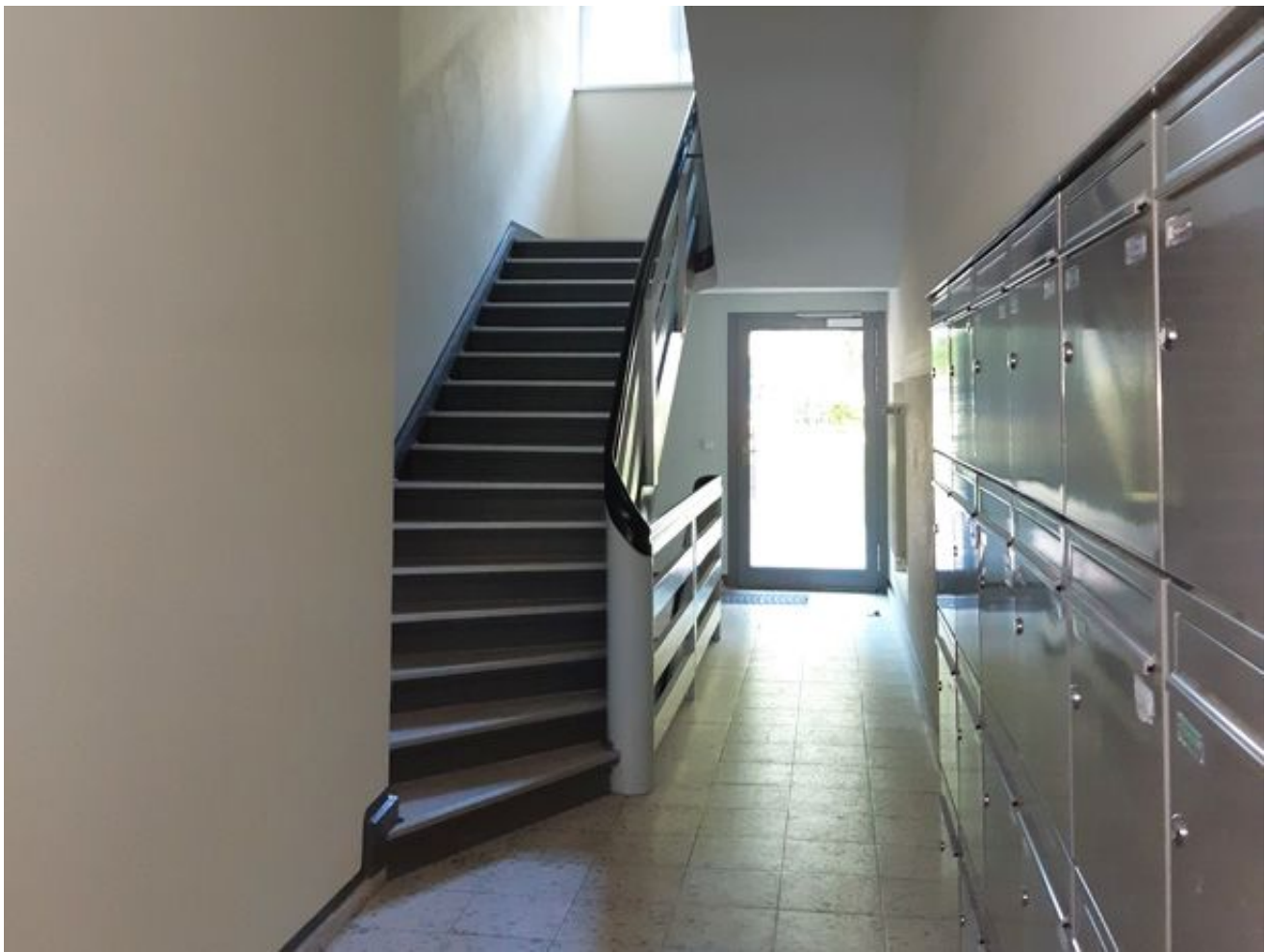


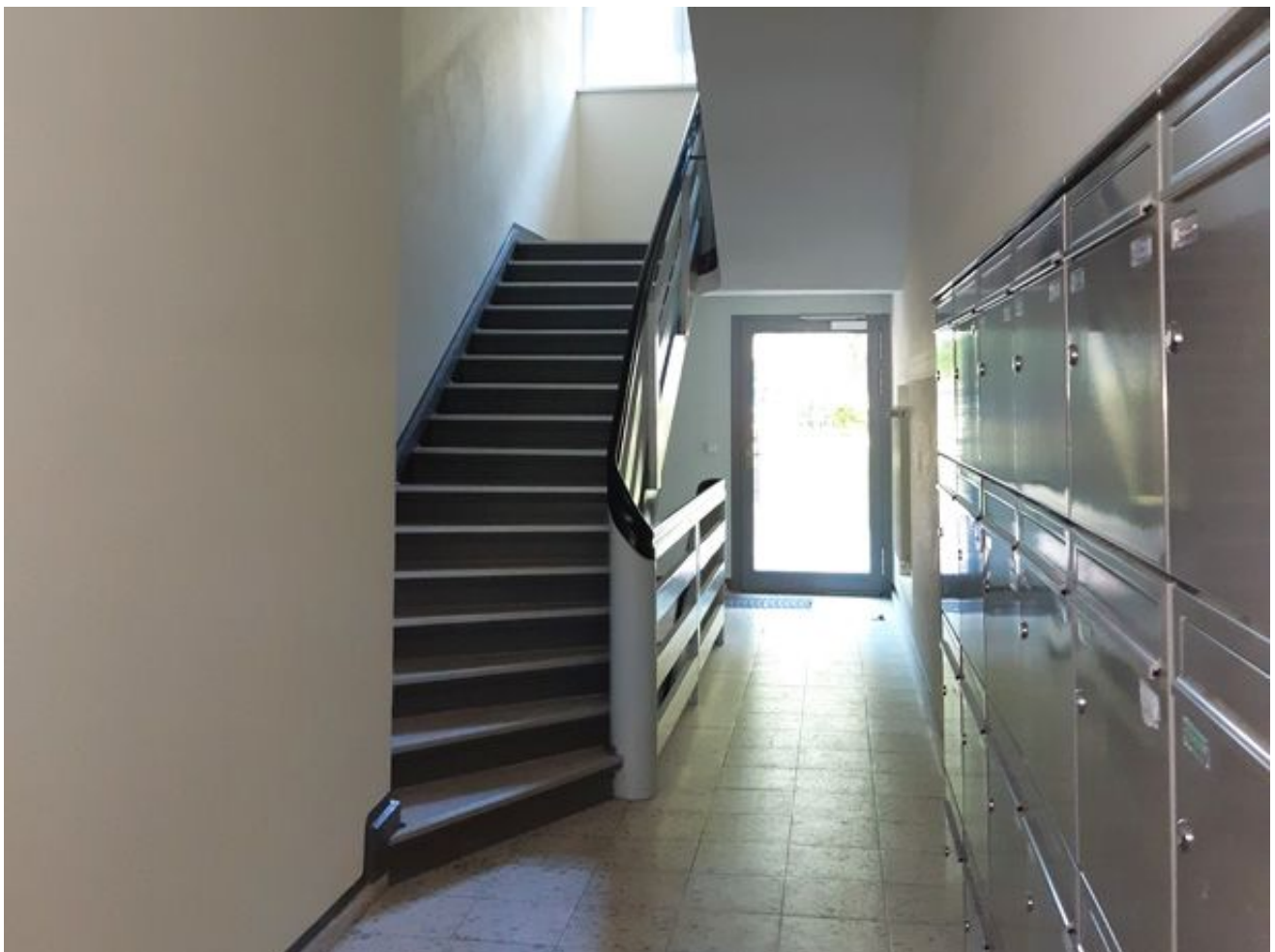
Modernisierung und Instandsetzung eines Wohnensembles

Oranienstr. 69 - 72 in 10969 Berlin





```
(function() { var sliderElement =  
[].slice.call(document.getElementsByClassName('mod_rocksolid_slider'), -1 )[0]; if (window.jQuery &&  
jQuery.fn.rstSlider) { init(); } else { document.addEventListener('DOMContentLoaded', init); } function  
init() { var $ = jQuery; var slider = $(sliderElement); slider.find('video[data-rsts-background], [data-rsts-  
type=video] video').each(function() { // Disable mejs for videos this.player = false; }); slider.rstSlider({"ty  
pe":"slide","direction":"x","navType":"thumbs","scaleMode":"none","imagePosition":"top-left","centerCo  
ntent":false,"random":false,"loop":false,"videoAutoplay":false,"autoplayProgress":false,"pauseAutoplayOn  
Hover":true,"keyboard":true,"captions":false,"controls":true,"thumbControls":true,"combineNavItems":tru  
e,"visibleAreaAlign":0.5,"gapSize":"0%","thumbs":{"width":"240","height":"460","controls":true,"slideMa  
xCount":1,"slideMinSize":180,"slideMaxSize":180,"rowMaxCount":3,"rowMinSize":180,"prevNextSteps":  
1,"gapSize":20,"direction":"y"} }); // Fix missing lightbox links $(function() { if (!$.fn.colorbox) { return;  
} var lightboxConfig = { loop: false, rel: function() { return $(this).attr('data-lightbox'); }, maxWidth:  
'95%', maxHeight: '95%' }; var update = function(links) { links.colorbox(lightboxConfig); }; slider.on('rsts-  
slidestart rsts-slidestop', function(event) { update(slider.find('a[data-lightbox]')); });  
update(slider.find('a[data-lightbox]')); }); } })();
```



```
(function() { var sliderElement =
[].slice.call(document.getElementsByClassName('mod_rocksolid_slider'), -1 )[0]; if (window.jQuery &&
jQuery.fn.rstSlider) { init(); } else { document.addEventListener('DOMContentLoaded', init); } function
init() { var $ = jQuery; var slider = $(sliderElement); slider.find('video[data-rsts-background], [data-rsts-
type=video] video').each(function() { // Disable mejs for videos this.player = false; }); slider.rstSlider({"ty
pe":"slide","direction":"x","navType":"thumbs","scaleMode":"none","imagePosition":"top-left","centerCo
ntent":false,"random":false,"loop":false,"videoAutoplay":false,"autoplayProgress":false,"pauseAutoplayOn
Hover":true,"keyboard":true,"captions":false,"controls":true,"thumbControls":true,"combineNavItems":tru
e,"visibleAreaAlign":0.5,"gapSize":"0%","thumbs":{"width":"240","height":"460","controls":true,"slideMa
xCount":1,"slideMinSize":180,"slideMaxSize":180,"rowMaxCount":3,"rowMinSize":180,"prevNextSteps":
1,"gapSize":20,"direction":"y"} }); // Fix missing lightbox links $(function() { if (!$.fn.colorbox) { return;
} var lightboxConfig = { loop: false, rel: function() { return $(this).attr('data-lightbox'); }, maxWidth:
'95%', maxHeight: '95%' }; var update = function(links) { links.colorbox(lightboxConfig); }; slider.on('rsts-
slidestart rsts-slidestop', function(event) { update(slider.find('a[data-lightbox]')); });
update(slider.find('a[data-lightbox]')); }); } })();
```

Leistungen

- Generalplanung

Zeitraum:	2016 - 2020
Anzahl WE/GE:	99/9
Bauherr:	WBM Wohnungsbaugesellschaft Berlin-Mitte mbH

Maßnahmen

- Hüllensanierung
- Strangsanierung
- Schadstoffsanierung
- Brandschutzmaßnahmen
- Gebäudeinstandsetzung
- Leer-WE-Sanierung
- Aufzüge
- Freianlagen
- KfW-Effizienzhaus 100

